

MEMBER – BOARD OF GOVERNORS INTERNATIONAL WATER MANAGEMENT INSTITUTE



About the organization

Established in 1985, the **International Water Management Institute (IWMI)** (www.iwmi.org) is a non-profit, scientific research organization with its headquarters in Colombo, Sri Lanka, and regional offices across Africa and Asia. Applied research at the Institute focuses on improving the management of water and land resources, with the aim of underpinning food security and reducing poverty while safeguarding vital environmental processes.



IWMI's research is designed to influence development choices and outcomes, and focuses on:

- water security and access, including resilience to climate change;
- productive and sustainable water use, particularly in agriculture;
- water quality and recovery of organic waste, and their relationships to health and the environment;
- balancing built and natural infrastructure; and
- governance of water resources, including institutional, distributional and equity issues.

IWMI's vision is 'A water-secure world', as outlined in its *Strategy 2014-2018*. The Institute's mission is to *provide evidence-based solutions to sustainably manage water and land resources for food security, people's livelihoods and the environment*. IWMI embraces the core values of excellence, objectivity, integrity, knowledge sharing, impact orientation, partnerships and teamwork, and respect for diversity.

In 2012, IWMI was awarded the prestigious Stockholm Water Prize by the Stockholm International Water Institute (SIWI) for its pioneering research.

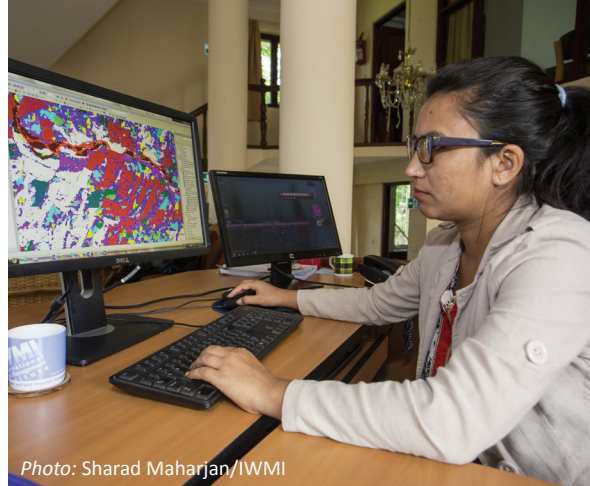
IWMI is a member of CGIAR, a global research partnership for a food-secure future, and leads the CGIAR Research Program on Water, Land and Ecosystems (WLE) (<http://wle.cgiar.org>).

Board opportunities

The Board of Governors of IWMI is seeking to appoint two new members in 2016 and another two in 2017.

Role of the Board of Governors

The Board of Governors ensures IWMI's success by collectively directing its affairs while meeting the appropriate interests of its funders and stakeholders. It oversees the Institute's strategy and ensures best practice in corporate governance. In this role, the Board provides strategic guidance on research program directions, protection of stakeholder and public interests, and provision of oversight and risk management.



Principal responsibilities of an IWMI Board member are to ensure the following:

- IWMI has a sound strategy and effective programs that are consistent with its charter, mission and relevant acts and regulations, including host country agreements.
- The Institute is managed effectively in harmony with agreed objectives, programs and budgets, and in accordance with legal and regulatory requirements.
- The resources provided by donors are effectively and judiciously utilized.
- Leadership is of a high caliber.
- Adoption of high ethical standards, values and sound policies, while maintaining financial integrity and accountability.



Basic responsibilities of a Board member:

The Board of Governors meets twice annually at a time and place determined by the Board, generally once at IWMI's headquarters in Colombo, Sri Lanka, and again at one of its regional offices. Meetings usually take place over 3 days. As the need arises, there may be short virtual Board meetings to review any urgent management, finance or programmatic matters.

All Board members are expected to:

- be diligent in attending to Board business and prepare well for Board discussions;
- bring balance and objectivity;
- serve as an ambassador and advocate for IWMI and its research work;
- avoid conflicts of interest and declare potential conflicts; and
- contribute to a collegial and productive business culture.



Board membership requirements:

To maintain a sufficiently broad perspective in policy making, the Board strives for diversity and balance in its composition. Given the Board's focus on strategic matters, a requisite for Board membership is big picture thinking and experience. IWMI seeks to maintain a lively range of experiences and perspectives on the Board, with gender and regional diversity being key considerations. Therefore, the Board actively recruits to ensure a balance in gender and regional composition. Understanding the diverse cultural, sociopolitical and institutional settings within which we operate is essential, and IWMI strives to have at least half of its Board members from developing and emerging economies.

Other considerations include previous Board or governance experience, financial literacy, and experience in research, development, civil society organizations and the private sector.

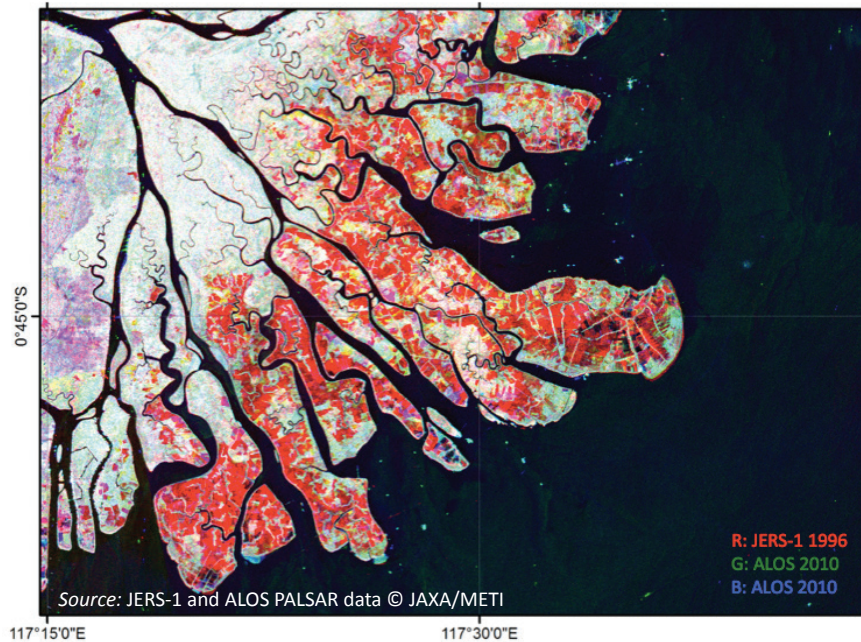
Over the next 2 years, IWMI will be seeking to appoint four new members to complement the continuing members on the Board. This is, therefore, a wide ranging call looking for prospective nominees with relevant backgrounds, particularly in the fields of:

- economics;
- water resources policy, planning and management;
- social sciences, including gender;
- natural resources and ecosystem services; and
- irrigated agriculture.

Nominees may have a background in the government sector, private sector, nongovernmental organizations (NGOs), development organizations and research.

Tenure

All Board members will serve an initial three-year term of office with the possibility of extension for a second consecutive term of an additional 3 years. They receive a nominal honorarium and expenses for their involvement in Board meetings and any other representation meetings they attend on behalf of IWMI.



Nominations

Nominations of suitable candidate(s) who have indicated their willingness to be considered as an IWMI Board member should be submitted by third parties and are invited by sharing their name(s), affiliation(s) and contact details. The Nominations Committee Secretary will then contact longlisted candidate(s) and request them to share their application in standard format for consideration by the Nominations Committee.

IWMI offers a collegial, diverse and gender-sensitive working environment, and we strongly encourage applications from qualified women and candidates from developing and emerging economies.

Nominations should be sent to Shalini Kumaresan at s.kumaresan@cgiar.org by **July 31, 2016**.

IWMI Headquarters

127 Sunil Mawatha, Pelawatte, Battaramulla, Colombo, Sri Lanka
Mailing address: P. O. Box 2075, Colombo, Sri Lanka
Tel: +94 11 2880000, 2784080; Fax: +94 11 2786854
Email: iwmi@cgiar.org; Web: www.iwmi.org



IWMI is a member of the CGIAR Consortium and leads the:



RESEARCH PROGRAM ON
Water, Land and Ecosystems